

TV

ROUNDUP

THE CHICAGO AMERICAN

NORTHERN ILLINOIS AND WISCONSIN

Complete TV Listings

NOV. 23-29

ZANY DANE . . . Victor Borge stars in an hour-long Thanksgiving Week special on CBS-TV Saturday (8-9 p. m., CST). Borge will present a number of guest stars between his comic antics at the piano and his performances with the orchestra.



Daily TV Programs

The following programs generally are the same from 6:30 a. m. to 6:30 p. m. Monday through Friday. Any exception will be noted below on specific days involved.

Programs Listed in Central Standard Time. (L) Live; (F) Films; (C) Colorcasts.



ART LINKLETTER
1:30 p. m., CBS-TV

6:30 A. M.
4M, 6D, 11, 13E, 33, 39—CONTINENTAL CLASSROOM (L)

7:00 A. M.
2—CHEER UP TIME (L)

7:30 A. M.
4M, 6D, 11, 13E, 33, 39—TODAY: Two hours of news, variety, features (L)

7:45 A. M.
13R—TV FEATURE (F)

8:00 A. M.
2, 3, 4R, 13R, 18—CAPT. KANGAROO: Kid show (L)

8:45 A. M.
2, 3, 4R, 13R, 18—CBS NEWS (L)

9:00 A. M.
2, 3, 4R, 7, 13R, 18—FOR LOVE OR MONEY: Quiz show (L)

9:15 A. M.
4M—NEW IN KITCHEN (L)

9:30 A. M.
5—MOVIES: Mon., "You Only Live Once"; Tues., "The Getaway"; Wed., "Crystal Ball"; Thurs., Not announced; Fri., "Captain is a Lady."

9:45 A. M.
6D—ROMPER ROOM (L)

10:00 A. M.
11, 13E, 33, 39—DOUGH RE MI: Musical quiz (L)

10:15 A. M.
12—FUN HOUSE (F)

10:30 A. M.
2, 3, 4R, 7, 13R, 18—PLAY YOUR HUNCH: Quiz show (L)

10:45 A. M.
4M, 6D, 11, 13E, 33, 39—TREASURE HUNT: Quiz (L)

11:00 A. M.
12—WOMEN'S ANGLE (L)

11:15 A. M.
2, 3, 4R, 7, 13R, 18—ARTHUR GODFREY (L)

11:30 A. M.
4M, 6D, 11, 13E, 33, 39—PRICE IS RIGHT: Quiz show (L)

11:45 A. M.
4M, 6D, 11, 13E, 33, 39—THANKSGIVING PARADE: Macy's Parade, from New York (L); Thurs. only.

12:00 NOON
12—HOUR OF STARS: Drama (F)

12:15 NOON
13E—FILM

12:30 NOON
13R—NEWS, MARKETS (L)

12:45 NOON
18—IDA LUPINO: Drama (F)

1:00 P. M.
33, 39—HOUR OF STARS: Drama (F)

1:15 P. M.
6D—ESPECIALLY FOR YOU (L)

1:30 P. M.
4M—MID-DAY (L) (C)

1:45 P. M.
4R, 13R, 18—AS THE WORLD TURNS: Serial drama (L)

2:00 P. M.
5, 12, 27—MOTHER'S DAY: Home making (F)

2:15 P. M.
6D—TROUBLE WITH FATHER: Comedy (F)

2:30 P. M.
8—TOP PLAY: Mon., only; Tues., "Playhouse"; Wed., "Ranch Party"; Thurs., "Our Miss Brooks"; Fri., "Boots and Saddles" (F)

2:45 P. M.
13E—FILM

3:00 P. M.
2, 3, 4R, 7, 8, 13R, 18—JIMMY DEAN SHOW: Musical comedy (L)

3:15 P. M.
4M—WOMAN'S WORLD (L) (C)

3:30 P. M.
5, 12, 27—LIBERACE: Variety (F)

3:45 P. M.
6D, 11, 13E, 33, 39—TRUTH OR CONSEQUENCES: Audience participation (L) (C)

4:00 P. M.
2—NEW TODAY (L)

4:15 P. M.
3, 4R, 7, 8, 13R, 18—HOUSE PARTY: Audience participation (L)

4:30 P. M.
4M, 6D, 11, 13E, 33, 39—HAGGIS BAGGIES: Quiz (L) (C)

4:45 P. M.
5—OVERSEAS ADVENTURE (F)

5:00 P. M.
12—MATINEE: Drama (F)

5:15 P. M.
27—PLAYHOUSE: Drama (F)

5:30 P. M.
4M, 6D, 11, 13E, 33, 39—FOOTBALL: Texas vs. Texas A&M (L); Thurs. day only

5:45 P. M.
2, 3, 4R, 7, 8, 13R, 18—THE BIG PAYOFF: Quiz (L)

6:00 P. M.
4M, 6D, 11, 13E, 33, 39—TODAY IS OURS: Serial drama (L)

6:15 P. M.
5, 12, 27—CHANCE FOR ROMANCE: Friendship show (F)

6:30 P. M.
7—BURNS AND ALLEN: Comedy (F)

6:45 P. M.
21—WEATHER WISE: Mon. only; Tues., "Friendly Giant"; Wed., "Pioneer Wisconsin" (F)

6:55 P. M.
2, 3, 4R, 7, 8, 13R, 18—VERDICT IS YOURS: Courtroom drama (L)

7:10 P. M.
4M, 6D, 11, 13E, 33, 39—FROM THESE ROOTS: Serial drama (L)

7:25 P. M.
5—HOMEMAKERS GUILD (L)

7:40 P. M.
6M—LIBERACE: Mon., Wed. and Fri.; Tues., "Janet Dean"; Thurs., "Molly" (F)

7:55 P. M.
12—OUR MISS BROOKS: Situation comedy (F)

8:10 P. M.
27—FERN FLOWER SHOW: Mon. only; "Luella Mortenson"; Tues. and Thurs.; "Playhouse"; Wed. and Fri. (L)

8:25 P. M.
2, 3, 4R, 7, 8, 13R, 18—BRIGHTER DAY: Dramatic serial (L)

8:40 P. M.
4M, 6D, 11, 13E, 33, 39—QUEEN FOR A DAY: Audience participation (L)

8:55 P. M.
5, 12, 27—BEAT THE CLOCK: Quiz (F)

9:10 P. M.
6M—ROMPER ROOM (L)

9:25 P. M.
7—NOT ANNOUNCED

9:40 P. M.
2, 3, 4R, 7, 8, 13R, 18—SECRET STORM: Dramatic serial (L)

9:55 P. M.
2, 3, 4R, 7, 8, 13R, 18—EDGE OF NIGHT: Dramatic serial (L)

10:10 P. M.
4M, 6D, 11, 13E, 33, 39—COUNTY FAIR: Bert Parks, m. c. (L)

10:25 P. M.
5, 12, 27—WHO DO YOU TRUST? Quiz (F)

10:40 P. M.
2, 3—AS THE WORLD TURNS: Serial drama (F)

10:55 P. M.
4M—COMEDY TIME (F)

11:10 P. M.
4R—HOUR OF STARS: Drama (F)

11:25 P. M.
5, 6M, 13R, 27—AMERICAN BANDSTAND: Musical (L)

11:40 P. M.
6D—CACTUS JIM (F)

11:55 P. M.
7—FILM FEATURE

12:10 P. M.
8—FILMS

12:25 P. M.
11—KITCHEN SHOW (L)

12:40 P. M.
12—UNCLE HUGO: Cartoons, Mon., Wed. and Fri.; "Gretchen Colnik, Household Hints"; Tues. and Thurs. (F)

12:55 P. M.
13E—MOVIE: Mon., "The Crowd Roars"; Tues., "Shadowed"; Wed., "Thunderhead"; Thurs., "Purple Heart"; Fri., "Key Largo."

1:10 P. M.
33—MEN OF ANNAPOLIS: Mon. only; Tues., "Bev Stark Show"; Wed., "Waterfront"; Thurs., "Carson Guilely"; Fri., "Public Service" (F)

1:25 P. M.
39—FILM

1:40 P. M.
4:15 P. M.

1:55 P. M.
39—MOVIES: Not announced

2:10 P. M.
4:30 P. M.

2:25 P. M.
2—HOUSE PARTY: Art Linkletter (F)

2:40 P. M.
3—FILM FEATURE

4M—MOVIES: Mon., "The Little Kidnappers"; Tues., "Go, Man, Go"; Wed., "Suddenly"; Thurs., "Mary Jane's Pa"; Fri., "Manhattan Angel"

6D—CAPTAIN KEN: Hour program (L)

7—MANSION MIRROR: Hour program (L)

8—FILM

11—UNCLE TOM: Kid show, until 5:45 p. m. (L)

33—MR. FLICKER: Cartoons until 6 p. m. (F)

5:00 P. M.

2—BUGS BUNNY: Mon. only; Tues., "Woody Woodpecker"; Wed., "Wild Bill Hickok"; Thurs., "Huckleberry Hound"; Fri., "Texas Rangers" (F)

3—PEANUT GALLERY: Hour show (L)

4R—AMERICAN BANDSTAND: Musical (L)

5—KIDDIE KORNER (L)

6M—FIVE O'CLOCK HOP: Mon., Wed. and Fri. (L)

8—ORGAN TIME: Mon. only; Tues., "Brave Eagle"; Wed., "Big Picture"; Thurs., "Jungle Jim"; Fri., "Whirlybirds" (F)

12—SUPERMAN: Mon. only; Tues., "Woody Woodpecker"; Wed., "Wild Bill Hickok"; Thurs., "Huckleberry Hound"; Fri., "Roy Rogers" (F)

13E—FILM

13R—BANDSTAND: Mon. only; Tues., "Looney Tunes"; Wed., "This Is Alice"; Thurs., "Huckleberry Hound"; Fri., "Cartoons" (F)

5:30 P. M.

2—POPEYE CARTOONS

4R—NEWS (L)

5, 12, 13R, 27—MICKEY MOUSE CLUB: Features for children (F)

6D—NEWS: Sports (F)

6M—LIFE WITH ELIZABETH: Comedy (F)

7—ANNIE OAKLEY: Mon. only; Tues., "Sherwood Forest"; Wed., "Brave Eagle"; Thurs., "Rocky Jones"; Fri., "Buckskin" (F)

8—ADVENTURE TIME: Mon. only; Tues., "Jet Jackson"; Wed., "Texas Rangers"; Thurs., "Kiddie Hour"; Fri., "Huckleberry Hound" (F)

13E—FILM FEATURES

18—NEWS (L)

39—POPEYE CARTOONS

5:45 P. M.

4R, 18—CBS NEWS (L)

6D—NBC NEWS (L)

11—SPORTS (L)

6:00 P. M.

2—NEWS: Weather (L)

3—NEWS: Weather (L)

4R—LONE RANGER: Mon. only; Tues., "Annie Oakley"; Wed., "This Is Alice"; Thurs., "Sky King"; Fri., "If You Had a Million" (F)

4M—NEWS (L)

5—NEWS (L)

6M—JET JACKSON: Mon. only; Tues., "Gene Autry"; Wed., "Casey Jones"; Thurs., "Bengal Lancers"; Fri., "Brave Eagle" (F)

6D—WOODY WOODPECKER: Mon. only; Tues., "Lawrence Welk"; Wed., "Zorro"; Thurs., "Wild Bill Hickok"; Fri., "Huckleberry Hound" (F)

7—NEWS: Weather (L)

8—FARM DIGEST (L)

11—NEWS: Weather (L)

12—DEADLINE 12: News (L)

13R—NEWS: Weather (L)

13E—FILM FEATURE

18—AMOS AND ANDY: Comedy (F)

21—DINNER MUSICAL (L)

27—EARLY REPORT: News (L)

33—NEWS: Weather (L)

39—ROCKFORD REPORT (L)

6:15 P. M.

2, 3, 7, 13R—CBS NEWS (L)

4M, 11, 13, 39—NBC NEWS (L)

8—NEWS (L)

5, 12, 27—ABC NEWS (L)

13E—NEWS: Weather (L)

Programs Listed in Central Standard Time. (L) Live; (F) Films; (C) Colorcasts.

- 7:00 A. M.**
13E-BIG PICTURE (F)
- 7:30 A. M.**
13E-FILM FEATURE
- 8:00 A. M.**
13E-INDUSTRY ON PARADE (F)
- 8:15 A. M.**
13E-CHRISTIAN SCIENCE (F)
- 8:30 A. M.**
2-CHRISTOPHERS (F)
13E-GOSPEL HOUR (L)
18-LIGHT OF FAITH (F)
- 9:00 A. M.**
2, 3, 4R, 13R, 18-LAMP UNTO MY FEET: Religious program: "Religion and the Social Order" (F)
4M-RELIGIOUS SERVICE (L)
5-CHRISTIAN SCIENCE: Religious (F)
6D-DON THE DECKHAND: Cartoons until 10:45 a. m.
13E-GENE AUTRY (F)
- 9:15 A. M.**
5-THIS IS THE ANSWER (F)
- 9:30 A. M.**
2, 3, 4R, 13R, 18-LOOK UP AND LIVE: Religious; "Creative Response of the Christian Today" (L)
12-OFF TO ADVENTURE (F)
- 9:45 A. M.**
5-THIS IS THE LIFE (F)
7-SACRED HEART (F)
12-THE PORTHOLE (F)
- 10:00 A. M.**
2, 3, 4R, 7, 18-UN IN ACTION: With Daniel Schorr (L)
4M-JOURNAL COMICS (L)
12-CHRISTOPHERS (F)
13E-MELODY TIME (F)
13R-ZERO 1960: Documentary (F)
- 10:15 A. M.**
5-CHRISTOPHERS (F)
- 10:30 A. M.**
2, 3, 4R, 7, 13R, 18-CAMERA THREE: Educational (L)
4M-THIS IS THE LIFE: Religious drama (F)
5-COMPASS (F)
12-ANSWERS FOR TODAY (F)
- 10:45 A. M.**
6D-MOVIE: Not announced
- 11:00 A. M.**
2-SACRED HEART (F)
3-LET'S TRAVEL (F)
4R, 7, 8-THIS IS THE LIFE: Religious drama (F)
4M-MEN'S CLUB: Discussion (L)
5-BIG PICTURE (F)
12-DEAN PIKE: Discussion (F)
13R-MOVIE: Not announced
13E-ROY ROGERS (F)
18-LAUREL, HARDY (F)
- 11:15 A. M.**
2-THE PORTHOLE (F)
- 11:30 A. M.**
2, 3, 4R, 7, 18-FACE THE NATION: Panel discussion with Stuart Novins, moderator; guest, Sen. Barry Goldwater (R-Ariz.) (L)
4M-MAN CALLED X: Adventure series (F)
8-CHRISTOPHERS (F)
5, 12-JOHN HOPKINS: Educational (F)



LORETTA YOUNG plays the worried wife of an ambitious executive (John Newland) in "The Woman Between" on NBC-TV's "Loretta Young Show" Sunday (9 p. m., CST).

- 11:45 A. M.**
6D-LEARN TO DRAW (F)
- 12:00 NOON**
2-CARTOONS
3-STAGE SEVEN: Drama (F)
4R-BIG PICTURE (F)
4M-BOWLING: Hour match (F)
6D, 11, 13E-THIS IS THE LIFE: Drama (F)
5-BIBLE PUPPETS (F)
7-HOMER BELL (L)
8-TOWN HALL: Discussion (F)
12-CARTOON CLUB: Film
13R-UNCOMMON VALOR: Documentary (F)
18-PERFORMANCE: Drama (F)
33-THE PORTHOLE (F)
39-INDUSTRY ON PARADE (F)
- 12:15 P. M.**
33, 39-CHRISTIAN SCIENCE (F)
- 12:30 P. M.**
2-NEWS (L)
3-FLORIAN ZABACH: Musical (F)
4R-BOWLING STARS (F)
5-MOVIE: "Trade Winds," Fredric March, Joan Bennett, 1938 release.
6D, 11, 33, 39-FRONTIERS OF FAITH (L)
- 1:00 P. M.**
7-BIG PICTURE (F)
8-CHRISTIAN SCIENCE (F)
13R-BUD WILKINSON (F)
13E-THIS IS THE ANSWER: Religious (F)
18-INSIDE FOOTBALL (F)
- 12:45 P. M.**
2-AGRICULTURE (L)
8, 13R, 18-KICKOFF (F)
- 1:00 P. M.**
2-MOVIE: Not announced
3-MOVIE: "Prisoner of Shark Island," Warner Baxter, 1936 release.
4R, 8, 13R, 18-PRO FOOTBALL: Chicago Cardinals vs. Pittsburgh Steelers (L)
4M-MOVIE: "Cyrano de Bergerac," Jose Ferrer, 1950 release
6D-NEWS: Sports (L)
7-MOVIES: "Sign of the Ram" and "Pride of the Legion"; until 4 p. m.
12-NEWS CONFERENCE (F)
11, 13E-ORAL ROBERTS (F)
27-THIS IS THE LIFE (F)
33, 39-MR. WIZARD (F)
- 1:15 P. M.**
6D-PASTOR'S DESK (L)

- 1:30 P. M.**
12-CHALLENGE (L)
27-ORAL ROBERTS (F)
6D, 11, 13E, 33, 39-BASKETBALL: St. Louis at Cincinnati (L)
- 2:00 P. M.**
12-POPEYE CARTOONS
27-MOVIE: "Third Man," Orson Welles, Joseph Cotten, 1949 release.
- 2:30 P. M.**
3-LIBERACE: Musical (F)
5-SERMONS IN SCIENCE (F)
12-MOVIE: Not announced
- 3:00 P. M.**
3-MEDICAL SCIENCE: "Rables" (F)
4M-GENIUS: Discussion (L)
5-OPEN HEARING (L)
6M-INVITATION TO FAITH: Religious program (L)
- 3:15 P. M.**
6M-WE, THE PEOPLE (F)
- 3:30 P. M.**
2-ARTHRITIS (F)
4M-HUMAN RIGHTS: Discussion (L)
5-BUILDING AMERICA (F)
6D-SABER OF LONDON: Adventure series with Donald Gray (F)
6M-OPEN BOOK (L)
11-SHERLOCK HOLMES: Mystery (F)
13E-BOWLING: Hour match (F)
- 4:00 P. M.**
2-BOWLING: Northeastern Wisconsin Championship (L)
3-EFFECTIVE READING (F)
4M, 11, 33, 39-OMNIBUS: Hour program with Alistair Cooke, host (L)
4R-DISNEYLAND: Hour show (F)
5, 27-ALL-STAR GOLF: Hour match (F)
6D-EVASHEVSKY SHOW (L)
6M-GENE AUTRY (F)
7-ORAL ROBERTS (F)
8-WAGON TRAIN: Hour drama (F)
12-NOT ANNOUNCED
13R-MAN WITHOUT A GUN: Drama with Rex Reason (F)
18-CASE OF DR. ZHIVAGO: Special report on Boris Pasternak's Nobel Prize-winning book (L)
- 4:30 P. M.**
3, 7, 13R, 18-AMATEUR HOUR: With Ted Mack, m. c. (L)
6M-RAMAR: Adventure series starring Jon Hall (F)
13E-CHAPEL TIME (L)
13R-NOT ANNOUNCED
- 5:00 P. M.**
2, 3, 4R, 13R, 18-SMALL WORLD: Edward R. Murrow, host (L)
4M, 11, 33, 39-SCIENCE SERIES: Hour program, "The Strange Case of the Cosmic Rays," with Richard Carlson and Dr. Frank Baxter; how stars effect man (L) (C), repeat
5, 12, 27-PAUL WINCHELL SHOW: Variety (L)
6D-PERFORMANCE: Drama (F)
6M-GENE AUTRY (F)
7-THE RIFLEMAN: Western series with Chuck Connors (F)
8-BENGAL LANCERS: Adventure series (F)
13E-MICHAELS IN AFRICA (F)
- 5:30 P. M.**
2, 3, 4R, 7, 8, 13R, 18-TWENTIETH CENTURY: Filmed documentary of the strange dictatorships of Juan and Evita Peron in Argentina (F)
6D-BOLD JOURNEY: True adventure stories (F)
6M-SOLDIERS OF FORTUNE: Adventure series (F)
5, 12, 13E-LONE RANGER: Western adventure; Lone Ranger sets out to prove that a lawman's girl is a murderess in "Lady Killer" (F)
27-MAN AND HIS WORLD: Documentary (F)

Continued on Next Page.

WIS Sun., Nov. 23, 1958—3

Channel 2—WBAY, Green Bay, Wis.
Channel 3—WISC, Madison, Wis.
Channel 4R—WHBF, Rock Island, Ill.
Channel 4M—WTMJ, Milwaukee, Wis.
Channel 5—WFRV, Green Bay, Wis.
Channel 6D—WOC, Davenport, Ia.
Channel 6M—WITI, Milwaukee, Wis.
Channel 7—WSAU, Wausau, Wis.
Channel 8—WKBT, La Crosse, Wis.

Channel 11—WMBV, Marinette, Wis.
Channel 12—WISN, Milwaukee, Wis.
Channel 13R—WREX, Rockford, Ill.
Channel 13E—WEAU, Eau Claire, Wis.
Channel 18—WXIX, Milwaukee, Wis.
Channel 21—WHA, Madison, Wis.
Channel 27—WKOW, Madison, Wis.
Channel 33—WMTV, Madison, Wis.
Channel 39—WTVU, Rockford, Ill.

Sunday

Continued from Preceding Page

6:00 P. M.

2, 3, 4R, 8, 13R, 18—**LASSIE**: Adventure series with Jon Provost; Lassie saves the life of a young bear cub that has been shot by juvenile archers (F)

4M—**ANNIE OAKLEY**: Adventure series with Gail Davis (F)

5—**NEWS**: Weather (L)

4M—**ORAL ROBERTS** (F)

4D, 12, 27—**YOU ASKED FOR IT**: Request show, with Jack Smith; two of the West's outstanding gunmen will match draws; a trip to a self-supporting boys farm and Herr Harlow, the German "Nose Balancer" (F)

7—**NEWS**: Weather (L)

33—**FOOTBALL HIGHLIGHTS** (F)

11, 39—**SABER OF LONDON**: Mystery series with Donald Gray (F)

13E—**FILM FEATURE**

6:30 P. M.

2, 3, 4R, 7, 8, 13R, 18—**BACHELOR FATHER**: Situation comedy with John Forsythe; the wife of an important client picks Bentley as the future husband for her ugly niece (F)

4M, 6D, 11, 13E, 33, 39—**NORTHWEST PASSAGE**: Adventure series with Keith Larsen; the Rangers discover a gunpowder maker's plot to steal a new formula in "The Long Rifle" (F) (C)

5, 12, 27—**MAVERICK**: Hour drama with James Garner and Jack Kelly; the Maverick brothers join in a wild scheme to recover \$15,000 from the bank in "Shady Deal at Sunny Acres" (F)

4M—**PUBLIC CONFERENCE**: Discussion (L)

7:00 P. M.

2, 3, 4R, 7, 8, 13R, 18—**ED SULLIVAN SHOW**: Hour variety show; guests, Herb Shriner, Kathryn Grayson, Pat Stanley and Shelley Berman (L)

4M, 6D, 11, 13E, 33, 39—**STEVE ALLEN SHOW**: Hour variety; guests, Claudette Colbert, Jackie Cooper and singer Carol Hughes (L) (C)

4M—**LIBERACE**: Musical (F)

7:30 P. M.

5, 12, 27—**LAWMAN**: Western adventure series with John Russell; Troop's deputy stakes his job on the honesty of a friend whose brothers are both criminals in "The Badge" (F)

4M—**JEFFREY JONES**: Adventure (F)

8:00 P. M.

2, 4R, 7, 8, 13R, 18—**THEATER**: Drama, "A Turkey for the President," with Ronald Reagan and Nancy Davis; Indian couple offer the President a Thanksgiving present (F)

3—**NEW YORK CONFIDENTIAL**: Drama (F)

4M, 6D, 11, 13E, 33, 39—**DINAH SHORE SHOW**: Hour musical, with guests, Roy Rogers and George Montgomery (L) (C)

5—**WHIRLYBIRD**: Adventure series (F)

4M—**MOVIE**: "Battles of Chief Pontiac," Lex Barker.

12, 27—**COLT 45**: Adventure series with Wade Preston; a peso marked with a black cross is the clue to a traitorous plot in "Rebellion" (F)

8:30 P. M.

2, 3, 4R, 7, 8, 18—**ALFRED HITCHCOCK**: Drama, "Safety for the Witness," with Art Carney; gunsmith witnesses a murder and takes the matter of survival into his own hands (F)

5—**BADGE 714**: Adventure series starring Jack Webb (F)

12—**NOT ANNOUNCED**

13R—**NEW YORK CONFIDENTIAL**: Adventure series (F)

27—**HONEYMOONERS**: Comedy starring Jackie Gleason (F)

9:00 P. M.

2, 3, 4R, 8, 13R, 18—**KEEP TALKING**: Panel show, with Carl Reiner, m. c. (L)

4—Sun, Nov. 23, 1958 WIS

Monday



RITA MORENO

7:30 p. m., CBS-TV

Regularly scheduled
6:30 a. m.-6:30 p. m.
programs on Page 2.

6:30 P. M.

2, 3, 4R, 8, 13R, 18—**NAME THAT TUNE**: Musical quiz with George de Witt, m. c. (L)

4M, 6D, 11, 33, 39—**TIC TAC DOUGH**: Quiz with Win Elliot, m. c. (L)

4M—**GENE AUTRY**: Western adventure (F)

5—**JUBILEE**: Musical (F)

7, 13E—**DISNEYLAND**: Hour program (F)

12—**POLKA-GO ROUND**: Musical; with Bob Lewandowski, m. c., and the Polka Rounders (L)

27—**JEFF'S COLLIE**: Drama starring Tommy Rettig (F)

6:45 P. M.

21—**SING HI, SING LO**: Folklore of America (F)

7:00 P. M.

2, 3, 4R, 8, 13R, 18—**THE TEXAN**: Western series with Rory Calhoun; man kills another man in a fair fight but is forced by law to care for the victim's family (F)

4M, 6D, 11, 33, 39—**THE RESTLESS GUN**: Western adventure series, with John Payne; Vint captures an insane one-armed killer in "No Way to Kill" (F)

5—**OFFICIAL DETECTIVE**: Adventure series (F)

6M—**SCOTLAND YARD**: Adventure series (F)

12—**BIG TEN HIGHLIGHTS** (F)

21—**BEHIND THE WEATHER**: Long range forecast (L)

27—**LUELLA MORTENSON**: Shoppers' special (L)

7:15 P. M.

21—**UN REVIEW** (F)

27—**TOM HOOPER** (L)

7:30 P. M.

2, 3, 4R, 8, 13R, 18—**FATHER KNOWS BEST**: Situation comedy with Robert Young and guest, Rita Moreno; an exchange student from India spends a weekend at the Anderson home (F)

4M, 6D, 11, 13E, 33, 39—**WELLS FARGO**: Western adventure series, with Dale Robertson; an Army colonel aids Hardie in breaking up a band of outlaws in "The Deserter" (F)

5, 12, 27—**BOLD JOURNEY**: True stories of adventuresome people; man-eating tiger hunt in the jungle of Northern India will be seen in "Global Safari" (F)

6M—**WHISTLER**: Adventure series (F)

7—**GROUCHO MARX**: Comedy quiz (F)

21—**GRAPHIC ARTS**: "German Expressionism in Graphic Art" (F)

8:00 P. M.

2, 3, 4R, 7, 8, 13R, 18—**DANNY THOMAS SHOW**: Situation comedy; Danny's uncle turns up in New York in the hope of becoming a playboy (F)

4M, 6D, 11, 13E, 33, 39—**PETER GUNN**: Adventure series with Craig Stevens; Gunn assists the D.A. in finding a man who has framed his son in "The Man with the Scar" (F)

5, 12, 27—**VOICE OF FIRESTONE**: Musical; operatic recital by Anna Moffo, Cesare Siepi and Rosalind Elias (L)

6M—**BADGE 714**: Drama; starring Jack Webb (F)

21—**JAZZ MEETS THE CLASSICS**: "Forms of Jazz" (F)

8:30 P. M.

2, 3, 4R, 7, 8, 13R, 18—**ANN SOTHERN SHOW**: Situation comedy with Ann Sothern; delinquent boys steal the Bartley House turkeys and nearly cause a hotel crisis (F)

4M, 6D, 11, 33, 39—**THEATER**: Drama, "Guy in Ward Four," with Richard Kiley; a doctor is conscience-stricken about helping sick soldiers back to health only to enable them to be killed in battle (F)

5, 12, 27—**ANYBODY CAN PLAY**: Quiz show with George Fenneman (L)

6M—**WRESTLING**: Hour match (F)

13E—**FRONTIER DOCTOR**: Adventure series starring Rex Allen (F)

21—**NEW DIMENSIONS**: The role of the educator in free society (F)

9:00 P. M.

2, 3, 4R, 18—**DESILU PLAYHOUSE**: Hour drama, "The Time Element," with William Bendix; the story of a man whose pre-Pearl Harbor fantasy turns into a terrifying reality (F)

4M, 6D, 11, 13E, 33, 39—**ARTHUR MURRAY**: Musical variety with Kathryn Murray, hostess; guests, Cornelia Otis Skinner, Peggy Ann Garner and Tommy Leonard (L) (C)

5, 13R—**HIGHWAY PATROL**: Adventure series starring Broderick Crawford (F)

7—**N. Y. CONFIDENTIAL**: Dramatic series (F)

8—**TENNESSEE ERNIE FORD**: Variety (F)

12—**SHERIFF OF COCHISE**: Drama (F)

27—**TRAFFIC COURT**: Trials (F)

9:30 P. M.

4M—**N. Y. CONFIDENTIAL**: Drama (F)

5, 6M—**JOHN DALY**: News (L)

6D—**BIG 10 HIGHLIGHTS**: Football films

7—**ZANE GREY**: Drama (F)

8—**NOT ANNOUNCED**

11—**IF YOU HAD A MILLION**: Drama (F)

12—**DEATH VALLEY DAYS**: Drama (F)

13R—**STATE TROOPER**: Adventure series with Rod Cameron (F)

13E, 33—**SCIENCE FICTION**: Drama (F)

27—**OFFICIAL DETECTIVE**: Adventure series starring Everett Sloane (F)

39—**PATTI PAGE**: Musical (F)

9:45 P. M.

5—**WEATHER** (L)

6M—**NEWS** (L)

9:50 P. M.

5—**MOVIE**: "Eternally Yours," Loretta Young, David Niven, 1939 release

10:00 P. M.

2—**NEWS**: Sports (L)

3—**NEWS**: Weather (L)

4M—**NEWS**: Weather (L)

4R—**OZIE AND HARRIET**: Comedy series with the Nelsons (F)

4D—**HIGHWAY PATROL**: Adventure series with Broderick Crawford (F)

6M—**MOVIE**: "Millionaire for Christy," Eleanor Parker, Fred MacMurray, 1951 release.

7—**NEWS**: Weather (L)

8—**NEWS**: Weather (L)

11—**NEWS**: Weather (L)

12—**DEADLINE 12**: News (L)

13E—**NEWS**: Sports (L)

Nov. 24, 1958

Tuesday

November 25, 1958

- 13R-NEWS: Sports (L)
18-LATE NEWS (L)
27-LATE REPORT: News, weather and sports (L)
33-NEWS: Sports (L)
39-NEWS: Sports (L)

10:15 P. M.

- 4M-FOOTBALL HIGHLIGHTS: With Milt Bruhn (L)
7-PETER GUNN: Adventure series starring Craig Stevens (F)
8-SPORTS (L)
11-JACK PAAR SHOW: Variety (L)
12-MOVIE: Not announced
18-MOVIE: "A Woman's Face," Joan Crawford, Melvyn Douglas, 1941 release.
27-JOHN DALY: News (F)

10:20 P. M.

- 3-MOVIE: "Don't Gamble With Love," Ann Sothern, 1936 release.
8-LAWMAN: Western series (F)

10:30 P. M.

- 2-MIRACLE OF SOUND (L)
4R-NEWS: Weather (L)
6D-NEWS: Sports (L)
13R-SUNSET STRIP: Hour drama (F)
13E-STREET OF DANGER: Drama (F)
27-MOVIE: "Way Down East," Henry Fonda, 1935 release.
33, 39-JACK PAAR SHOW: Variety (L)

10:45 P. M.

- 2-CHARLIE CHAN: Drama (F)
4M-TONIGHT IN MILWAUKEE: John Drury, m. c. (L)
7-SPORTS (L)

10:50 P. M.

- 4R-MOVIE: "U-Boat Prisoner," Bruce Bennett, 1944 release.
6D-FILM
8-SAN FRANCISCO BEAT: Drama (F)

11:00 P. M.

- 4M, 6D-JACK PAAR SHOW: Variety (L)
5-NEWS: Weather (L)
7-CHARTER BOAT: Drama (F)
13E-MOVIE: Not announced

11:15 P. M.

- 2-MOVIE: "Paradise Case," Gregory Peck, 1948 release.

11:20 P. M.

- 5-MOVIE: "The Getaway," Robert Sterling, Donna Reed, 1940 release.

11:30 P. M.

- 7-DATLINE EUROPE: Drama (F)
13R-CHARLIE CHAN: Mystery (F)

12:00 MIDNIGHT

- 12-NIGHT WATCH: Drama (F)



SEBASTIAN CABOT stars in "The Emperor's New Clothes" Tuesday on NBC-TV's "Shirley Temple's Storybook" (7-8 p. m., CST).

Regularly scheduled
6:30 a. m.-6:30 p. m.
programs on Page 2.

6:30 P. M.

- 2-THIS IS ALICE: Comedy (F)
3-BIG TEN HIGHLIGHTS: Football films
4R-MAN WITHOUT A GUN: Western starring Rex Reason (F)
4M, 11, 13E, 33, 39-DRAGNET: Dramas taken from files of Los Angeles police, with Jack Webb (F)
5, 12, 13R, 27-SUGARFOOT: Hour Western with Will Hutchins: Tom befriends a wounded soldier unaware that the man is a mentally unbalanced killer in "The Hunted" (F)
6M-BUCCANEERS: Adventure series (F)
7-TUGBOAT ANNIE: Drama (F)
8-COULEE CROSSROADS (L)
18-DAVID NIVEN: Drama (F)
21-CHILDREN'S CORNER: Stories for kids (F)

7:00 P. M.

- 2, 4R, 18-INVISIBLE MAN: Drama (F)
2-TARGET: Drama (F)
4M, 6D, 11, 13E, 33, 39-SHIRLEY TEMPLE: Hour drama, "The Emperor's New Clothes," with Ell Wailach, Sebastian Cabot and Barbara Lord; adapted from the Hans Christian Andersen Classic, the story tells how a clever citizen taught an emperor a lesson in values (F)
6M-JUNGLE JIM: Adventure series (F)
7-WYATT EARP: Western starring Hugh O'Brian (F)
8-THE RIFLEMAN: Western series starring Chuck Connors (F)
21-BRIEFING SESSION: Discussion (F)

7:30 P. M.

- 2, 3, 4R, 7, 18-TO TELL THE TRUTH: Panel show, with Bud Collyer, m. c. (L)
5, 8, 12, 13R, 27-WYATT EARP: Adventure series with Hugh O'Brian: Wyatt rushes to New Mexico to assist a beautiful young girl whose parents were killed in "Frontier Woman" (F)

- 6M-MYSTERY MY BUSINESS: Drama (F)
21-CHILDREN GROWING: "Tiger Under the Bed" (F)

8:00 P. M.

- 2, 3, 4R, 7, 8, 13R, 18-ARTHUR GODFREY SHOW: Variety show with Arthur Godfrey (L)
4M, 6D, 11, 33, 39-GEORGE BURNS SHOW: Situation comedy; "The Eighteen Year Old Novelist" (F)
5, 12, 27-THE RIFLEMAN: Western adventure series with Chuck Connors: young boy gets his father in serious trouble when he tries to play cupid in "The Sister" (F)
6M-INNER SANCTUM: Mystery (F)
13E-WYATT EARP: Adventure series, starring Hugh O'Brian (F)
21-CRIMINAL MIND: Analysis of the criminal mind (F)

8:30 P. M.

- 2, 3, 4R, 13R 18 - RED SKELTON SHOW: Comedy with Red Skelton; guest, William Frawley; Freddie the Freeloader tries to secure a turkey dinner (L)
4M, 6D, 11, 33, 39-BOB CUMMINGS SHOW: Situation comedy; Bob is completely opposed to Chuck becoming a rock 'n' roll singer in "Bob Becomes a Stage Uncle" (F)
5, 7, 8, 13E-TARGET: Dramatic series with Adolphe Menjou, host (F)
6M-CONFIDENTIAL FILE: Drama (F)
12, 27-NAKED CITY: Drama with John McIntyre, James Franciscus; gangster is murdered in a Manhattan barber shop in "The Bird Guard" (F)
21-THE SCARECROW: Two-hour play based on Hawthorne's short story, "Feathertop." Tale of an abandoned woman's revenge on her cruel lover (F)

9:00 P. M.

- 2, 3, 4R, 7, 8, 13R, 18-GARRY MOORE SHOW: Hour variety show with guests, Johnnie Ray and Denise Lor (L)
4M, 6D, 11, 33, 39-CALIFORNIANS: Adventure series starring Richard Coogan; Matt is forced to arrest a young bridegroom on the day of his marriage in "Dangerous Journey" (F)
5-NAKED CITY: Adventure series with John McIntire (F)

- 6M-FOLLOW THAT MAN: Drama (F)
12-TWENTY-SIX MEN: Drama (F)
13E-BOB CUMMINGS SHOW: Comedy (F)
27-GRAY GHOST: Adventure series (F)

9:30 P. M.

- 4M, 6D-STATE TROOPER: Adventure series, with Rod Cameron (F)
5, 6M-JOHN DALY: News (L)
11-PARIS PRECINCT: Drama (F)
12-TARGET: Dramatic series, with Adolphe Menjou, host (F)
13E-N. Y. CONFIDENTIAL: Drama (F)
27-SHERIFF OF COCHISE: Drama, starring John Bromfield (F)
33-HIGHWAY PATROL: Drama, with Broderick Crawford (F)
39-RIFLEMAN: Western starring Chuck Connors (F)

9:45 P. M.

- 5-MOVIE: "Thousands Cheer," Kathryn Grayson, Gene Kelly, 1943 release
6M-NEWS (L)

10:00 P. M.

- 2-NEWS: Sports (L)
3-NEWS: Weather (L)
4R-TARGET: Dramatic series with Adolphe Menjou, host (F)
4M-NEWS: Weather (L)
6D-PAT BOONE SHOW: Variety (F)
6M-MOVIE: "Paris Underground," Kurt Kruger, 1945 release.
7-NEWS: Sports (L)
8-NEWS: Weather (L)
11-NEWS: Weather (L)
12-DEADLINE 12: News (L)
13R-NEWS: Sports (L)
13E-NEWS: Sports (L)
18-LATE NEWS (L)
27-LATE REPORT: News, sports and weather (L)
33-NEWS: Sports (L)
39-NEWS: Sports (L)

10:15 P. M.

- 4M-AMERICAN PATROL: Drama, with John Bentley (F)
7-SILENT SERVICE: Drama (F)
8-SPORTS (L)
11-JACK PAAR SHOW: Variety (L)
12-MOVIE: Not announced
18-MOVIE: "Picture of Dorian Grey," George Saunders, Hurd Hatfield, 1945 release.
27-JOHN DALY: News (F)

10:20 P. M.

- 2-MOVIE: "Final Hour," Ralph Bellamy, 1936 release
8-ROUGH RIDERS: Western series (F)

10:30 P. M.

- 2-QUARTERBACK CLUB: Discussion (L)
4R-NEWS: Weather (L)
6D-NEWS: Sports (L)
13R-MOVIE: "Paradise Case," Gregory Peck, 1948 release
13E-MOVIE: Not announced
27-MOVIE: "Keep Your Powder Dry," Lana Turner, 1945 release
33, 39-JACK PAAR SHOW: Variety (L)

10:45 P. M.

- 4M-TONIGHT IN MILWAUKEE: John Drury, m. c. (L)
7-SPORTS (L)

10:50 P. M.

- 4R-MOVIE: "Homicide Bureau," Bruce Cabot, 1939 release
6D-FILM
8-CHARLIE CHAN: Mystery (F)

11:00 P. M.

- 2-MOVIE: "Gallant Journey," Glenn Ford, Janet Blair, 1946 release
4M, 6D-JACK PAAR SHOW: Variety (F)
5-NEWS: Weather (L)
7-THE WHISTLER: Drama (F)

11:20 P. M.

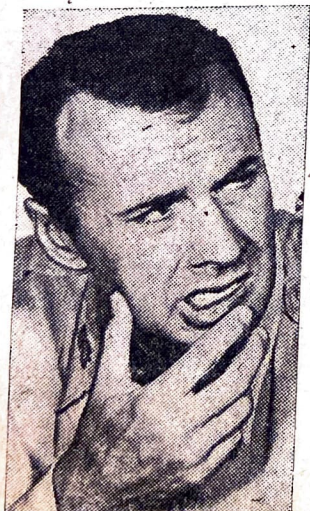
- 5-MOVIE: "Crystal Ball," Paulette Goddard, Ray Milland, 1943 release
8-ALL-STAR THEATER: Drama (F)

11:30 P. M.

- 7-CONFIDENTIAL FILE: Drama (F)
27-ALL-STAR THEATER: Drama (F)

12:00 MIDNIGHT

- 12-NIGHT WATCH: Drama (F)



RICHARD KILEY
8:30 p. m., NBC-TV

Sun., Nov. 23, 1958-5

Wednesday

November 26, 1958

Regularly scheduled
6:30 a. m.-6:30 p. m.
programs on Page 2.

6:30 P. M.

1. 13R—TUGBOAT ANNIE: Adventure series with Minerva Urecal (F)
- 3—KINGDOM OF THE SEA: Adventure series (F)
- 4R—JEFF'S COLLIE: Drama starring Tommy Rettig (F)
- 4M, 6D, 11, 13E, 33, 39—WAGON TRAIN: Hour Western series with Ward Bond; guest, Evelyn (Eloise) Rudie; Eloise gives up her tricycle and the carpeted corridors of her hotel for a mustang and the brush trails of Wagon Train in "The Millie Davis Story" (F)
- 5, 12, 27—LAWRENCE WELK: Hour musical (L)
- 6M—SHERWOOD FOREST: Adventure series (F)
- 7—PLAYHOUSE: Drama (F)
- 8—DISNEYLAND: Hour program (F)
- 18—O. HENRY PLAYHOUSE: Drama (F)

6:45 P. M.

- 21—SING HI, SING LO: Folklore of America (F)

7:00 P. M.

- 2, 3, 4R, 13R—PURSUIT: Hour dramatic series, "The House on Malibu," with Dane Clark, Jan Sterling; former fighter turned detective finds himself involved in murder because of a beautiful girl (L)
- 6M—THIS IS ALICE: Comedy (F)
- 7—PATTI PAGE SHOW: Musical (F)
- 21—HAND CRAFT: Series in cooperation with the Girl Scouts (F)

7:30 P. M.

- 4M, 6D, 7, 11, 13E, 33, 39—THE PRICE IS RIGHT: Audience participation with Bill Cullen, m.c. (L) (C)
- 8, 12, 27—ADVENTURES OF OZZIE AND HARRIET: Comedy with the Nelsons; family trouble exists when Dave gets fixed up with a pretty girl in "Harriet Creates a Triangle" (F)
- 6M—EVE ARDEN SHOW: Comedy (F)
- 21—EFFECTIVE READING: Ways of obtaining a more effective reading technique (F)

8:00 P. M.

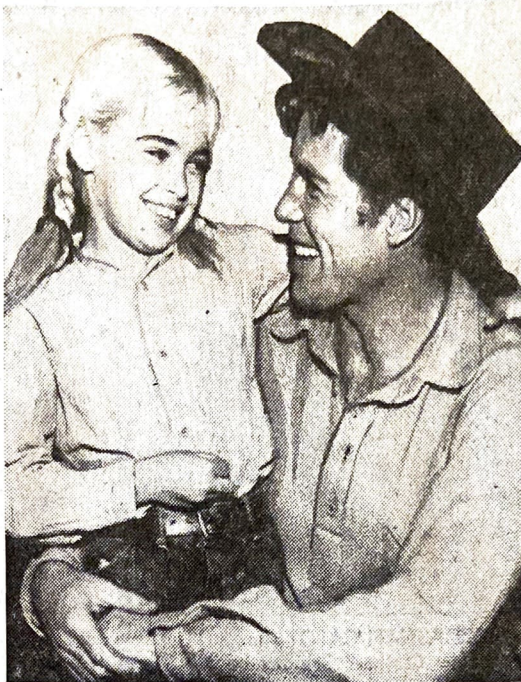
- 2, 3, 4R, 7, 8, 13R, 18—THE MILLIONAIRE: Each week someone receives \$1,000,000; Marine sergeant decides to share his gift with his "missing" brother (F)
- 4M, 6D, 11, 13E, 33, 39—MUSIC HALL: Musical variety starring Milton Berle; guest, Helen Traubel (L) (C)
- 5, 12, 27—DONNA REED SHOW: Situation comedy; Donna befriends a runaway boy on Thanksgiving Day (F)
- 6M—CITY DETECTIVE: Adventure series (F)
- 21—NEW DIMENSIONS: The role of the educator in the free society (F)

8:30 P. M.

- 2, 3, 4R, 7, 13R, 18—I'VE GOT A SECRET: Panel quiz with Garry Moore, m. c. (L)
- 4M, 6D, 11, 13E, 33, 39—BAT MASTER-SON: Adventure series starring Gene Barry; Bat teaches his dude friend from the East how to use a gun in "Dude's Folly" (F)
- 5, 12, 27—PATTI PAGE SHOW: Musical; guest, Mischa Elman (L)
- 6M—THE TRACER: Drama (F)
- 8—SEA HUNT: Adventure series with Lloyd Bridges (F)
- 21—LET'S SING: Lessons in the art of singing (L)

9:00 P. M.

- 2, 4R, 13R, 18—CIRCLE THEATER: Hour drama, "SSN-571," the historic crossing under the North Pole by the submarine Nautilus; Douglas Edwards, host (L)



ROBERT HORTON and Evelyn Rudie co-star in "The Millie Davis Story" Wednesday on NBC-TV's "Wagon Train" (6:30 p. m., CST).

- 3—WHIRLYBIRDS: Drama (F)
- 4M, 6D, 11, 33, 39—THIS IS YOUR LIFE: Host Ralph Edwards (L)
- 5, 8, 12, 27—BOXING: 10-round middle-weight bout between Yama Bahama of the British West Indies and Rudell Stitch of Louisville, from Louisville (L)
- 6M—FOLLOW THAT MAN: Mystery (F)
- 7—TENNESSEE ERNIE FORD: Variety (F)
- 13E—HIGHWAY PATROL: Drama (F)

9:30 P. M.

- 3—UNION PACIFIC: Drama (F)
- 4M—THEATER: Drama (F)
- 6D—SEA HUNT: Adventure series, starring Lloyd Bridges (F)
- 6M—CODE THREE: Drama (F)
- 7—DECOY: Drama (F)
- 11—PRO FOOTBALL HIGHLIGHTS (F)
- 13E—PLAYHOUSE: Drama (F)
- 33—THIS IS ALICE: Comedy (F)
- 39—DONNA REED SHOW: Situation comedy (F)

10:00 P. M.

- 2—NEWS: Sports (L)
- 3—NEWS: Weather (L)
- 4M—NEWS: Sports (L)
- 4R—SHERIFF OF COCHISE: Adventure series with John Bromfield (F)
- 5—MOVIE: "Long Voyage Home," John Wayne, Thomas Mitchell, 1940 release.
- 6D—ROUGH RIDERS: Adventure series (F)
- 6M—MOVIE: "Seven Days' Leave," Victor Mature, Lucille Ball, 1942 release.
- 7—MOVIE: Weather (L)
- 8—NEWS: Weather (L)
- 11—NEWS: Weather (L)
- 12—DEADLINE 12: News (L)
- 13E—NEWS: Sports (L)
- 13R—NEWS: Sports (L)
- 18—LATE NEWS (L)
- 27—LATE REPORT: News, sports and weather (L)
- 33—NEWS: Sports (L)
- 39—NEWS: Sports (L)

10:15 P. M.

- 4M—STAR PARADE: Drama (F)
- 7—MASQUERADE PARTY: Panel show (F)

- 8—SPORTS (L)
- 11—JACK PAAR SHOW: Variety (L)
- 12—MOVIE: Not announced
- 18—MOVIE: "Storm Fear," Cornel Wilde, 1956 release.
- 27—JOHN DALY: News (F)

10:20 P. M.

- 3—MOVIE: "Too Many Husbands," Jean Arthur, Fred MacMurray, 1940 release.
- 8—GREY GHOST: Adventure series (L)

10:30 P. M.

- 2—HOW TO MARRY A MILLIONAIRE: Comedy (F)
- 4R—NEWS: Weather (L)
- 6D—NEWS: Sports (L)
- 13E—GARRY MOORE SHOW: Hour variety (F)
- 13R—MOVIE: "Vanessa, Her Love Story," Helen Hayes, 1935 release.
- 27—MOVIE: "The Birthday Present," Tony Britton, 1957 release
- 33, 39—JACK PAAR SHOW: Variety (L)

10:45 P. M.

- 4M—WEEK IN SPORTS (L)
- 7—SPORTS (L)

10:50 P. M.

- 4R—MOVIE: "Close Call For Boston Blackie," Chester Morris, 1945 release.
- 6D—PHOTOGRAPHY (L)
- 8—WRESTLING (F)

11:00 P. M.

- 2—MOVIE: "Young Mr. Lincoln," Henry Fonda, 1939 release.
- 4M, 6D—JACK PAAR SHOW: Variety (L)
- 5—NEWS: Weather (L)
- 7—BUCCANEERS: Drama (F)

11:20 P. M.

- 5—MOVIE: "What Every Woman Knows," Helen Hayes, 1934 release.

11:30 P. M.

- 7—THE VISITOR: Drama (F)
- 13E—RAMAR: Drama (F)

12:00 MIDNIGHT

- 12—NIGHT WATCH: Drama (F)

Thursday

Regularly scheduled
6:30 a. m.-6:30 p. m.
programs on Page 2.

6:30 P. M.

- 2—THE HONEYMOONERS: Comedy, starring Jackie Gleason (F)
- 3—BARNSTORMERS (F)
- 4R, 18—I LOVE LUCY: Situation comedy starring Lucille Ball, Desi Arnaz and special guest, Ernie Ford; Lucy drives the weary travelers into a Tennessee jail (F)
- 4M, 39—JEFFERSON DRUM: Western series with Jeff Richards; a double for Billy the Kid comes to Jubilee with his wife and baby in "Thicker Than Water" (F)
- 5, 6D, 12, 27—LEAVE IT TO BEAVER: Situation comedy starring Jerry Mathers; Beaver succumbs to temptations and taunts in "The Pipe" (F)
- 6M—GENE AUTRY: Adventure series (F)
- 7—LASSIE: Dramatic series starring John Provost (F)
- 8—NOT ANNOUNCED
- 11—BIG TEN HIGHLIGHTS (F)
- 13R—ZANE GREY THEATER: Drama (F)
- 13E—ZORRO: Adventure series starring Guy Williams (F)
- 33—HUCKLEBERRY HOUND (F)

7:00 P. M.

- 2, 3, 4R, 7, 13R, 18—DECEMBER BRIDE: Situation comedy starring Spring Byington; Lily plays the roll of an overbearing mother-in-law in order to discourage a suitor (L)
- 4M, 6D, 11, 33, 39—ED WYNN SHOW: Comedy; Beamer fails to practice what he preaches in "The Parking Ticket" (F)
- 5, 12, 27—ZORRO: Adventure series, starring Guy Williams; tyrannical ruler and rebel leader meet in "Zorro and the Flag of Truce" (F)
- 6M—PASSPORT TO DANGER: Adventure series, with Cesar Romero (F)
- 8—GROUCHO MARX: Comedy quiz (F)
- 13E—MR. D. A.: Drama (F)

7:30 P. M.

- 2, 3, 4R, 18—YANCY DERRINGER: Adventure series with Jack Mahoney; a ruthless gang goes on a reprisal spree in "Lonesome Jackson" (F)
- 4M, 6D, 11, 13E, 33, 39—CONCENTRATION: Quiz with Jack Barry (L)



FRANCES RAFFERTY
7 p. m., CBS-TV.

November 27, 1958

Friday

Nov. 28, 1958

5, 12, 27—**THE REAL McCOYS**: Comedy series starring Walter Brennan; Grandpa schemes to win a hog contest and a bet with his neighbor in "The Perfect Swine" (F)

6M—**PLAYHOUSE**: Drama (F)

7—**PLAYHOUSE**: Drama (F)

8—**ZORRO**: Adventure series starring Guy Williams (F)

13R—**SEA HUNT**: Adventure series starring Lloyd Bridges (F)

8:00 P. M.

2, 3, 4R, 18—**ZANE GREY THEATER**: Drama "The Vaunted," with Eddie Albert and June Greer; notorious outlaw becomes the local hero (F)

5, 7, 12, 13R, 27—**PAT BOONE SHOW**: Musical with guest, Steve Allen (L)

4M—**BOOTS AND SADDLES**: Western drama (F)

6M—**SAN FRANCISCO BEAT**: Dramatic series (F)

6D, 11, 13E, 33, 39—**BEHIND CLOSED DOORS**: Counter-espionage series, with Bruce Gordon (F)

8—**MIDLAND SHOWTIME**: Drama (F)

8:30 P. M.

2, 3, 4R, 7, 8, 13R, 18—**PLAYHOUSE** 90-minute drama, "The Return of Ansel Gibbs," with Diana Lynn, Ilka Chase, Melvyn Douglas and Mary Astor; man struggles for human understanding and compassion after being called from retirement to a high government post (L)

4M, 6D, 11, 13E, 33, 39—**ERNIE FORD SHOW**: Variety show with Tennessee Ernie Ford (L) (C)

5, 12, 27—**ROUGH RIDERS**: Dramatic series starring Kent Taylor and Jan Merlin; L. Kirby stumbles upon a group of deserters in "Shadow of the East" (F)

6M—**MOVIE**: "Enchanted Cottage," Robert Mitchum, 1945 release

9:00 P. M.

4M, 6D, 11, 13E, 33, 39—**YOU BET YOUR LIFE**: Audience participation with Groucho Marx (F)

5, 12—**SEA HUNT**: Adventure series starring Lloyd Bridges (F)

27—**RESCUE SQUAD**: Drama (F)

9:30 P. M.

4M—**HIGHWAY PATROL**: Adventure series with Broderick Crawford (F)

5—**JOHN DALY**: News (L)

6D—**PERFORMANCE**: Drama (F)

11, 39—**MASQUERADE PARTY**: Quiz with Bert Parks, m. c. (L) (C)

12—**BURNS AND ALLEN**: Comedy (F)

13E—**DONNA REED SHOW**: Situation comedy (F)

27—**CITIZEN SOLDIER**: Drama (F)

33—**HOW TO MARRY A MILLIONAIRE**: Comedy (F)

9:45 P. M.

5—**MOVIE**: "Cry Havoc," Margaret Sullivan, 1943 release

10:00 P. M.

2—**NEWS**: Sports (L)

3—**NEWS**: Weather (L)

4M—**NEWS**: Weather (L)

4R—**DONNA REED SHOW**: Situation comedy (F)

6D—**MIKE HAMMER**: Adventure series (F)

7—**NEWS**: Weather (L)

8—**NEWS**: Weather (L)

11—**NEWS**: Weather (L)

12—**DEADLINE 12**: News (L)

13R—**NEWS**: Sports (L)

13E—**NEWS**: Sports (L)

18—**LATE NEWS** (L)

27—**LATE REPORT**: News, sports and weather (L)

33—**NEWS**: Sports (L)

39—**NEWS**: Sports (L)

10:15 P. M.

4M—**MASQUERADE PARTY**: Panel show (F)

6M, 27—**JOHN DALY**: News (F)

7—**NOT ANNOUNCED**

8—**SPORTS** (L)

11—**JACK PAAR SHOW**: Variety (L)

12—**MOVIE**: Not announced.

18—**MOVIE**: "Undercurrent," Katherine Hepburn, Robert Taylor, 1946 release

10:20 P. M.

3—**MOVIE**: "Venus Makes Trouble," James Dunn, 1937 release



JOLENE BRAND

7 p. m., ABC-TV

8—**THIS IS YOUR LIFE**: With Ralph Edwards (F)

10:30 P. M.

2—**THE LINEUP**: Drama (F)

4R—**NEWS**: Weather (L)

6D—**NEWS**: Sports (L)

6M—**MOVIE**: "Betrayal From the East," Nancy Kelly, 1945 release

13E—**MOVIE**: Not announced

13R—**MOVIE**: "My Brother Talks to Horses," Peter Lawford, 1946 release

27—**MOVIE**: "Life of Jimmie Dolan," Loretta Young, 1933 release

33, 39—**JACK PAAR SHOW**: Variety (L)

10:45 P. M.

4M—**TONIGHT IN MILWAUKEE**: John Drury, m. c. (L)

7—**SPORTS** (L)

10:50 P. M.

4R—**MOVIE**: "Penny Serenade," Cary Grant, Irene Dunne, 1941 release

6D—**FILM**

8—**CHAMPIONSHIP BOWLING** (F)

11:00 P. M.

2—**MOVIE**: "Navy Wife," Claire Trevor, 1936 release

4M, 6D—**JACK PAAR SHOW**: Variety (L)

5—**NEWS**: Weather (L)

7—**AMERICAN LEGEND**: Drama (F)

11:20 P. M.

5—**MOVIE**: "Captain is a Lady," Charles Coburn, 1939 release

11:30 P. M.

7—**SPY**: Adventure series (F)

12:00 MIDNIGHT

12—**NIGHT WATCH**: Drama (F)

Regularly scheduled
6:30 a. m.-6:30 p. m.
programs on Page 2.

6:30 P. M.

2, 3, 4R, 7, 8, 13R, 18—**YOUR HIT PARADE**: Musical with Dorothy Collins and Johnny Desmond; guest, George Shearing and his quintet (L)

4M, 6D, 11, 33, 39—**BUCKSKIN**: Western drama starring Tommy Nolan (F)

5, 12—**RIN TIN TIN**: Adventure series starring Lee Aaker; trouble with an Indian tribe brews on the trail to Fort Apache in "Bitter Bounty" (F)

6M—**LITTLE LULU**: Cartoons

13R—**HARBOR COMMAND**: Adventure series (F)

13E—**PATTI PAGE SHOW**: Musical (F)

27—**BOWLING STARS** (F)

7:00 P. M.

2, 3, 4R, 7, 8, 13R, 18—**TRACKDOWN**: Western series starring Robert Culp; young convict just released from prison goes home to avenge his brother's death (F)

4M, 6D, 11, 13E, 33, 39—**ELLERY QUEEN**: Hour mystery series with George Nader; a weekend party thrown by a social climber turns into mass murder in "Death Likes It Hot" (F) (C)

5, 12, 27—**DISNEYLAND**: With Walt Disney, host; guest, Roman Novarro, James Dunn and Skip Homeier; story of Elifego Baca, colorful New Mexican of the late 1800's in "Elifego—Lawman or Gunman" (F)

6M—**THE BROTHERS**: Situation comedy (F)

7:30 P. M.

2, 3, 4R, 7, 8, 13R, 18—**JACKIE GLEASON SHOW**: Variety show with Buddy Hackett (L)

6M—**MAMA**: Family drama starring Peggy Wood (F)

8:00 P. M.

2, 3, 4R, 8, 13R, 18—**PHIL SILVERS SHOW**: Situation comedy, starring Phil Silvers; Bilko gets the camp chaplain thrown in the chnk in "Bilko and the Chaplain" (F)

4M, 6D, 11, 33, 39—**M-SQUAD**: Adventure series with Lee Marvin; "The Sifters," Chicago housewives become the victims of a bookie ring (F)

5, 12, 27—**MAN WITH A CAMERA**: Mystery series starring Charles Bronson; Mike is assigned to cover a story at an Air Force base in "Another Barrier" (F)

6M—**MOVIE**: "The Bushwhackers," John Ireland, 1952 release

7—**BOB CUMMINGS SHOW**: Comedy (F)

13E—**SEA HUNT**: Adventure series with Lloyd Bridges (F)

8:30 P. M.

2, 3, 4R, 7, 8, 13R, 18—**PLAYHOUSE**: Drama; "Coney Island Winter," with Edmund O'Brien and Kathleen Crowley; Coney Island saloon keeper's past catches up with him while his wife discovers that he's still married to another woman (F)

4M, 6D, 11, 33, 39—**THIN MAN**: Adventure series starring Peter Lawford and Phyllis Kirk (F)

5, 12, 27—**SUNSET STRIP**: Hour mystery series starring Efrem Zimbalist Jr.; Bailey is hired to protect a beautiful blonde who claims her husband is trying to murder her in "The Well-Developed Frame" (F)

13E—**ROUGH RIDERS**: Western (F)

9:00 P. M.

2—**DEATH VALLEY DAYS**: Drama (F)

3, 4R, 8, 13R, 18—**THE LINEUP**: Drama series starring Warner Anderson and Tom Tully; prize fighter receives a series of telephone threats in "The Winner Take Nothing Case" (F)



KATHLEEN CROWLEY

8:30 p. m., CBS-TV

4M, 6D, 7, 11, 13E, 33, 39—**BOXING**: Ten-round heavyweight bout between Mike De John of Syracuse and Willie Besmanoff of Germany, from Madison Square Garden (L)

9:30 P. M.

2, 3, 4R, 13R, 18—**PERSON TO PERSON**: Interviews with Edward R. Murrow; guests, Pat Suzuki, star of the upcoming Broadway musical "The Flower Drum Song" and A. C. Fuller, founder of the Fuller Brush Company (L)

5, 6M—**JOHN DALY**: News (L)

8—**PATTI PAGE**: Musical (F)

12—**DECOY**: Drama (F)

27—**MIKE HAMMER**: Drama (F)

9:45 P. M.

5—**MOVIE**: "Thin Man Goes Home," William Powell, 1944 release.

6M—**NEWS** (L)

10:00 P. M.

2—**NEWS**: Sports (L)

3—**NEWS**: Weather (L)

4R—**OFFICIAL DETECTIVE**: Adventure series starring Everett Sloan (F)

4M—**NEWS**: Weather (L)

6D—**NAKED CITY**: Adventure series (F)

6M—**MOVIE**: "Mystery in Mexico," William Lundigan, 1948 release.

7—**NEWS**: Weather (L)

8—**NEWS**: Weather (L)

11—**NEWS**: Weather (L)

12—**DEADLINE 12**: News (L)

13E—**NEWS**: Sports (L)

13R—**NEWS**: Sports (L)

18—**LATE NEWS** (L)

27—**LATE REPORT**: News, weather and sports (L)

33—**NEWS**: Sports (L)

39—**NEWS**: Sports (L)

10:15 P. M.

4M—**POLKA TIME**: Musical (L)

7—**KNOW THE TRUTH** (F)

8—**SPORTS** (L)

11—**JACK PAAR SHOW**: Variety (L)

12—**MOVIE**: Not announced

18—**MOVIE**: "Somewhere I'll Find You," Clark Gable, Lana Turner, 1942 release.

27—**JOHN DALY**: News (L)

Continued on Page 10.

Sun., Nov. 23, 1958—7

TELEVISION CLOSEUPS

'Case of Dr. Zhivago' on CBS-TV Sunday

"The Case of Dr. Zhivago," a special report on Boris Pasternak, this year's Nobel Prize winner in literature, will be presented on the CBS Television Network Sunday (4 p. m., CST).

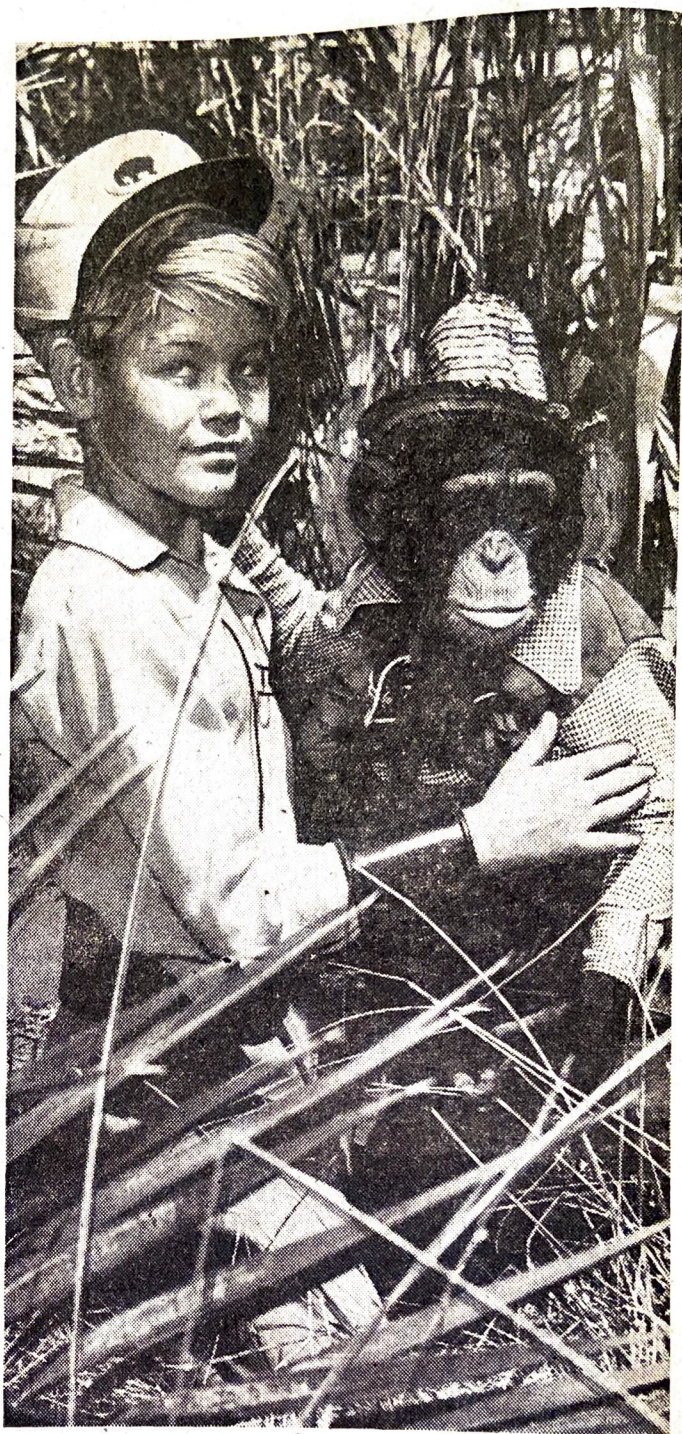
The special program will tell the story of the controversial author whose prize-winning novel, "Dr. Zhivago," is banned in the author's own home nation, the Soviet Union.

"The Case of Dr. Zhivago" will include an informed report on the activities of the Russian writer's organization which controls the literary output of all authors in the Soviet Union.

Sen. Goldwater Interviewed on 'Face the Nation' Sunday

Sen. Barry Goldwater (R-Ariz.), who won re-election to the U. S. Senate, will be the guest on "Face the Nation" on the CBS Television Network Sunday (11:30 a. m., CST).

The Senator will be interviewed by a panel of top newsmen. Moderator of "Face the Nation" is CBS News Correspondent Stuart Novins.



YOUNG MICKEY Braddock portrays Corky, an orphan boy traveling with the Big Top, in NBC-TV's "Circus Boy" (Saturdays, 10:30 a. m., CST).

JACKIE GLEASON gives us his impression of a Pilgrim at the first Thanksgiving in 1621. Gleason is seen Fridays (CBS, 7:30 p. m., CST).

Art Carney Stars in 'Peter and the Wolf'

By Charles Mercer

NEW YORK, Nov. 22 (AP)—For centuries the wolf has been the villain of folk literature, but now it seems that television is going to put in good word for him.

The occasion will be an hour-long special a week from tomorrow (Sunday, Nov. 30, 4 p. m., CST) on ABC-TV when "Art Carney Meets Peter and the Wolf."

THE MARIONETTES of Bill and Cora Baird will be featured with Carney as the only human actor of the Burt Shevelove production. Ogden Nash has written the lyrics to music composed by Paul Weston, based on themes from Serge Prokofiev's "Peter and the Wolf."

Basically the theme of the show is "the wolf trying to find a place in society," Baird said the other day in the Manhattan workshop where he, his wife and a number of assistants are creating special puppets for the program.

"**CARNEY IS** perfect for the role," Baird believes, "because he has a caustic quality that never becomes destructive."

Carney himself said in a separate conversation that he's enthusiastic about the role.

"I'm a typical, ordinary type of American guy in the show," he said. "I'm very relaxed, sort of like Bing Crosby—and I might say I'm glad I instead of him got the part."

"**TM A FELLOW** who likes to take a walk in the woods—

loves nature and never goes hunting. In my stroll I come to a clearing in the woods where I run into various animals portrayed by the Bairds' puppets.

"I talk with the animals and we do a little song and dance bit together and finally I run into the wolf. We talk and he keeps telling me that everybody has been given the wrong pitch on him for years. He's really not such a bad guy at all, he says.

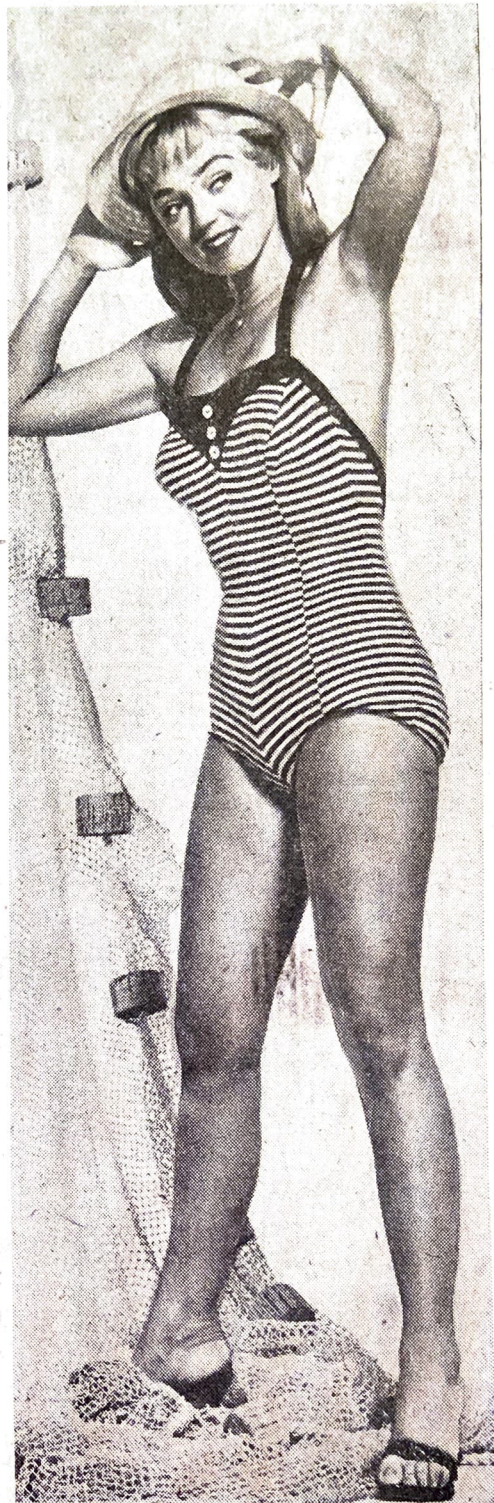
"**I MENTION** the matter of Little Red Riding Hood, and he says she framed him. Then I ask him what about the Three Little Pigs and he tries to con me out of thinking that he ever molested them. Then we do a routine together."

Prokofiev's "Peter and the Wolf" normally is performed as an orchestration accompanied by the narrator or a simple fairy tale. It takes 23 minutes to perform.

AT FIRST it was proposed to present it in its original form as a half-hour TV program. Then it was decided to expand it into an hour with original music based on the original Prokofiev themes and additional story line around the subject of the wolf.

Weston, a composer of many hit tunes, will conduct the orchestra for the show. Nash has written the lyrics only and the script for the program is by A. J. Russel.

OPERA STAR Rosalind Elias will be featured on ABC-TV's "Voice of Firestone" Mon. (8 p. m., CST).



LOVELY YVETTE Vickers appears frequently in ABC-TV's "Rough Riders" (Thursday, 8:30 p. m., CST).

Friday

Saturday

November 29, 1958

Continued From Page 7.

10:20 P. M.

- 3—MOVIE: "U-Boat Prisoner," Bruce Bennett, 1944 release.
- 8—THE THIN MAN: Drama, starring Peter Lawford (F)

10:30 P. M.

- 2—MAN WITHOUT A GUN: Adventure series (F)
- 4R—NEWS: Weather (L)
- 6D—NEWS: Sports (L)
- 7—NOT ANNOUNCED
- 13E—MOVIE: Not announced
- 13R—MOVIE: "Garden Murder Case, Edmund Lowe, 1936 release.
- 27—MOVIE: "Princess O'Rourke," Olivia De Havilland, Robert Cummings, 1943 release.
- 33, 39—JACK PAAR SHOW: Variety (L)

10:45 P. M.

- 4M—TONIGHT IN MILWAUKEE (L)
- 6D—SPORTSREEL (F)
- 7—SPORTS (L)

10:50 P. M.

- 4R—TWENTY SIX MEN: Adventure series (F)
- 8—MOVIE: Not announced

11:00 P. M.

- 2—MOVIE: "Notorious," Cary Grant, Ingrid Bergman, 1946 release.
- 4M, 6D—JACK PAAR SHOW: Variety (L)
- 5—NEWS: Weather (L)
- 7—MOVIE: "Girl in the Picture"

11:20 P. M.

- 4R—MOVIE: "Whole Town's Talking," Edward G. Robinson, Jean Arthur, 1935 release.
- 5—MOVIE: "Silver Queen"

11:30 P. M.

- 6M—MOVIE: "Enemy Agent," Robert Armstrong, 1940 release

12:00 MIDNIGHT

- 4M—MOVIE: "Night of the Hunter," Robert Mitchum, Shelley Winters, 1955 release
- 6D—WRESTLING (F)
- 12—MOVIE: Not announced
- 18—MOVIE: "Passport to Alcatraz," Jack Holt, 1940 release



BUDDY HACKETT

7:30 p. m., CBS-TV

10—Sun., Nov. 23, 1958

7:00 A. M.

- 2—CHEER UP TIME (L)
- 13E—U. OF WISCONSIN (L)

7:30 A. M.

13E—FILM FEATURE

8:00 A. M.

- 13E—KINGDOM OF THE SEA: Drama (F)

8:30 A. M.

- 2, 3, 4R, 7, 13R, 18—CAPT. KANGAROO: Cartoons (F)
- 6D—CARTOON CARNIVAL (F)
- 13E—CARTOONS (F)
- 33—POPEYE CARTOONS (F)

9:00 A. M.

- 4M, 6D, 11, 33, 39—HOWDY DOODY: Puppet show (F)
- 5—MOVIES: Not announced
- 13E—FLASH GORDON: Adventure series (F)

9:30 A. M.

- 2, 3, 4R, 7, 13R, 18—MIGHTY MOUSE: Cartoons (F)
- 4M, 6D, 11, 33, 39—RUFF AND REDDY: Cartoons (F)
- 12—LIFE IN WISCONSIN (L)
- 13E—CARTOONS (F)

10:00 A. M.

- 2—SKY KING: Adventure series starring Kirby Grant (F)
- 3, 13R, 18—HECKLE AND JECKLE (F)
- 4R—IOWANA POW-WOW (L)
- 4M, 6D, 7, 11, 33, 39—FURY: Adventure series with Bobby Diamond; "Ten Dollars a Head" (F)
- 13E—MOVIE: Not announced

10:30 A. M.

- 2, 4R, 13R, 18—ROBIN HOOD: Adventure series starring Richard Greene; Robin and Friar Tuck go on a mission to Scotland in "Highland Fling" (F)
- 3—SKY KING: Adventure (F)
- 4M—TERRYTOONS (F)
- 6D, 11, 33, 39—CIRCUS BOY: Adventure series starring Mickey Bradock (F)
- 7—CHRISTOPHERS (F)
- 12—QUESTION PLEASE (L)

11:00 A. M.

- 2, 4R—HECKLE AND JECKLE: Cartoons
- 3—KIT CARSON (F)
- 4M—SKY KING: Adventure series with Kirby Grant (F)
- 5, 12—UNCLE AL (L)
- 6D, 11, 33, 39—TRUE STORY: Drama (F)
- 7—MOVIE: Not announced
- 8—MIGHTY MOUSE (F)
- 13R—LEARN TO DRAW (F)
- 18—LAUREL, HARDY (F)

11:30 A. M.

- 2—BUGS BUNNY: Cartoons
- 3—PEANUT GALLERY: Until 1 p. m.
- 4R—RAMAR OF THE JUNGLE: Adventure series (F)
- 4M—CIRCUS BOY: Drama (F)
- 6D, 11, 33, 39—DETECTIVE'S DIARY: Starring Donald Gray (F)
- 8, 13E—FURY (F)
- 13R—RODDY MAC (L)
- 18—BILLY'S QUIZ (L)
- 27—CHRISTOPHERS (F)

12:00 NOON

- 2—NOON SHOW (L)
- 4M, 6D, 7, 8, 11, 13E, 33, 39—FOOTBALL: Army-Navy game, from Philadelphia (L)
- 4R—MOVIE: Not announced
- 5—LOOK OR LISTEN: Until 5 p. m. (L)
- 12—CARTOONS
- 13R—LONE RANGER: Western adventure (F)
- 18—STAR PERFORMANCE: Drama (F)
- 27—FARM AND HOME: Hour program (L)

12:30 P. M.

- 2—FILM FEATURE
- 13R—TAKE A STAND (L)
- 18—MOVIE: "Don't Gamble With Love," Ann Sothern, 1937 release

1:00 P. M.

- 2, 3, 4R, 13R—PRO HOCKEY: Boston Bruins vs. New York Rangers (L)
- 12—MOVIE: Not announced
- 27—MOVIE: Not announced

2:00 P. M.

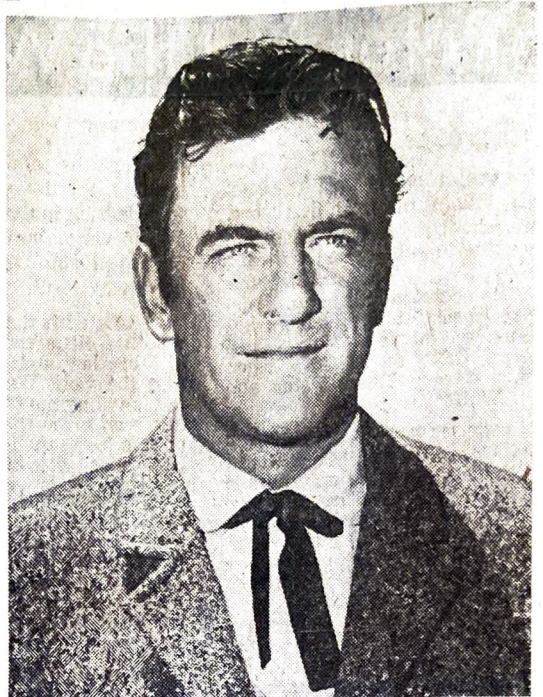
- 18—NOT ANNOUNCED

2:30 P. M.

- 12—MOVIE: Not announced
- 18—BIG PICTURE (F)

3:00 P. M.

- 6M—FARM SCENE (L)
- 18—HAMMER AND SICKLE (F)
- 27—BIG PICTURE (F)



JAMES ARNESS stars as Marshal Matt Dillon in CBS' "Gunsmoke" (Saturdays, 9 p. m., CST). Dennis Weaver plays Chester.

3:30 P. M.

- 3—RURAL U. S. A. (L)
- 4M, 6D, 7, 8, 11, 13E, 33, 39—EXPLORING WITH HOPE: Special hour program, with Bob Hope, m. c.; guests, Ben Alexander, Mollie Bee, and the Les Brown band; program designed to encourage boys of high school age to join the new Boy Scout Explorer program (F)
- 4R—BIG PICTURE (F)
- 6M—GENE AUTRY (F)
- 18—PAGEANT (F)
- 27—UNCLE AL (L)

4:00 P. M.

- 2—MOVIE: Not announced
- 3—EFFECTIVE READING (F)
- 4R—MUSICAL (F)
- 6M—DANCE PARTY: Musical until 5 p. m. (L)
- 12—COMEDY CLUB: Cartoons
- 13R—ALL-STAR GOLF: Hour match (F)
- 18—MILWAUKEE REPORTS (L)
- 27—LET'S FIND OUT (F)

4:30 P. M.

- 3—PERFORMANCE: Drama (F)
- 4R—LONE RANGER (F)
- 4M—HOT SHOTS: Musical (L)
- 6D—CACTUS JIM (F)
- 7—FILM
- 8—ALL-STAR GOLF: Hour match (F)
- 11—MICHIGAN STATE U. (L)
- 13E—NOT ANNOUNCED
- 18—STAR PERFORMANCE: Drama (F)
- 33—CAMPUS CAPERS (L)
- 39—BIG PICTURE (F)

4:45 P. M.

- 7—CHURCHES SPEAK (L)

5:00 P. M.

- 3—LIVE AND LEARN (L)
- 4R, 13E—ALL-STAR GOLF: Hour match between Sam Snead and Roberto DeVincenzo, from Boca Raton, Fla. (F)
- 4M—TRUE STORY: Drama (F)
- 5—PERFORMANCE: Drama (F)
- 6M—SIR LANCELOT: Adventure (F)
- 6D, 13R—RIN TIN TIN: Adventure series, starring Lee Aaker (F)
- 11—U. OF MICHIGAN (L)

- 12—NOT ANNOUNCED
- 18—FRONTIER DOCTOR: Adventure series (F)
- 27—CHAMPIONSHIP BOWLING: Hour match (F)
- 33—POPEYE CARTOONS: Until 6 p. m.
- 39—MOVIE: Not announced

5:15 P. M.

- 7—LONE RANGER (F)

5:30 P. M.

- 3—THE PEOPLE AROUND US (F)
- 4M—DETECTIVE'S DIARY: Adventure series with Donald Gray (F)
- 5—INSIDE FOOTBALL (F)
- 6D—CHEYENNE: Hour drama starring Ty Hardin (F)
- 6M—DR. HUDSON: Drama (F)
- 3—LONE RANGER: Adventure series (F)
- 11—MOVIE: Not announced
- 13R—ZORRO: Adventure series, starring Guy Williams (F)
- 18—LONE RANGER (F)

5:45 P. M.

- 3—THIS IS THE STORY (F)
- 5—PUPPET THEATER (F)
- 7—NEWS (L)

6:00 P. M.

- 2—NEWS: Sports (L)
- 3—LEARN TO DRAW (F)
- 4M—NEWS: Weather (L)
- 4R, 7—LAWMAN: Western series with John Russell (F)
- 5—CASEY JONES: Adventure (F)
- 6M—WRESTLING: Hour match (F)
- 8—LAWRENCE WELK: Hour musical (F)
- 12—IT'S A DRAW (L)
- 13R—DISNEYLAND: Hour program (F)
- 13E—INSIDE FOOTBALL (L)
- 18—DICK POWELL: Drama (F)
- 27—EARLY REPORT: News; weather and sports (L)
- 33—FRONTIER: Drama (F)
- 39—COMMAND PERFORMANCE: Drama (F)

6:15 P. M.

- 3—FARM NEWSREEL (F)
- 4M—SPORTS PICTURE (L) (C)
- 13E—NEWS: Sports (L)
- 27—MAYOR'S REPORT (L)

6:30 P. M.

- 2, 3, 4R, 18—PERRY MASON: Hour adventure series, starring Raymond Burr; Perry defends a beautiful blonde on a homicide charge in "The Case of the Nervous Accomplice" (F)
4M, 11, 13E, 33, 39—PEOPLE ARE FUNNY: Audience participation (L)
12, 27—DICK CLARK SHOW: Musical (L)
1—LAWRENCE WELK: Hour musical (F)

7:00 P. M.

- 4M, 6D, 11, 13E, 33, 39—PERRY COMO SHOW: Hour musical variety with Perry Como; guests, Ethel Merman and singer Conway Twitty (L) (C)
5—SUSIE: Comedy (F)
4M—MOVIE: "Breaking the Sound Barrier," Ralph Richardson, 1952 release
12, 27—JUBILEE U. S. A.: Hour musical (L)
1—LORETTA YOUNG SHOW: Drama (F)
13R—YANCY DERRINGER: Adventure series (F)

7:30 P. M.

- 2, 3, 4R, 8, 13R, 18—WANTED, DEAD OR ALIVE: Western dramatic series starring Steve McQueen; Josh brings in a killer and lands in jail (F)
5—SILENT SERVICE: Stories of U. S. Submarine Service (F)
7—SEA HUNT: Drama starring Lloyd Bridges (F)

8:00 P. M.

- 2, 3, 4R, 7, 8, 18—COMEDY AND MUSIC: Hour show with Victor Borge and guest, ballerina Alicia Markova (L)
4M, 6D, 11, 33, 39—STEVE CANYON: Adventure series with Dean Fredericks; Canyon pilots a B-52 that drops an H-bomb at Bikini (F)
5, 12, 13R, 27—LAWRENCE WELK SHOW: Hour musical (L)
13E—PAT BOONE: Musical (F)

8:30 P. M.

- 4M, 6D, 11, 13E, 33, 39—CIMARRON CITY: Hour adventure series with George Montgomery; "Beast of Cimarron," Matt and Lane lead the townsmen in search of a legendary monster (F)

9:00 P. M.

- 2, 3, 4R, 7, 8, 13R, 18—GUNSMOKE: James Arness stars as U. S. Marshal Matt Dillon; because of a practical joke, Matt is forced to defend himself and a dead man against an angry posse (F)
5, 12, 27—SAMMY KAYE SHOW: Musical (L)
4M—HOW TO MARRY A MILLIONAIRE: Comedy (F)



ALICE LON
8 p. m., ABC-TV

9:30 P. M.

- 2—NEW YORK CONFIDENTIAL: Adventure series (F)
3—SEA HUNT: Adventure series, with Lloyd Bridges (F)
4M, 4R, 11—FLIGHT: Drama (F)
5—MOVIE: "Night of Terror"
6M—MOVIE: "Man They Couldn't Hang," Boris Karloff, 1939 release
6D, 11, 13E, 33, 39—BRAINS AND BRAWN: Quiz, with Jack Lescaouie (L)
7—THIN MAN: Adventure series, starring Peter Lawford (F)
8—PETER GUNN: Adventure series starring Craig Stevens (F)
12—MOVIE: Not announced
13R—HAVE GUN, I WILL, TRAVEL: Western adventure series starring Richard Boone (F)
18—THE CRUSADERS: Adventure series starring Brian Keith (F)
27—MOVIE: Not announced

10:00 P. M.

- 2-26 MEN: Drama (F)
3—NEWS: Sports (L)
4M—MOVIE: "Androcles and the Lion," Victor Mature, Jean Simmons, 1952 release
4R—WYATT EARP: Western, starring Hugh O'Brian (F)
6D—PATTI PAGE SHOW: Musical (F)
7—WAGON TRAIN: Hour Western drama (F)
8—NEWS: Sports (L)
11—MOVIE: "Jack London," Michael O'Shea, 1943 release
13E—NEWS (L)
13R—THE HONEYMOONERS: Situation comedy, starring Jackie Gleason (F)
18—LATE NEWS (L)
33—NEWS (L)
39—MIKE HAMMER: Drama (F)

10:15 P. M.

- 8—BOB CUMMINGS SHOW: Situation comedy (F)
18—MOVIE: "Eyes in the Night," Edward Arnold, 1942 release
33—MAN WITHOUT A GUN: Drama (F)

10:20 P. M.

- 3—GALE STORM SHOW: Situation comedy (F)

10:30 P. M.

- 2—MOVIE: "Sunday Dinner for a Soldier"
4R—THE RIFLEMAN: Western series with Chuck Connors (F)
6D—SILENT SERVICE: Drama (F)
13E—LAWRENCE WELK: Hour musical (F)
13R—SAN FRANCISCO BEAT: Drama (F)
39—MOVIE: Not announced

10:45 P. M.

- 8—MOVIE: Not announced
33—INSIDE FOOTBALL (F)

10:50 P. M.

- 3—MOVIE: "Escape to Glory," Pat O'Brien, 1940 release

11:00 P. M.

- 4R—MOVIE: "Red Salute," Robert Young, Barbara Stanwyck, 1935 release
6D—NEWS (L)
6M—MOVIE: "Admiral Was a Lady," Edmund O'Brien, Wanda Hendrix, 1950 release
7—MOVIE: Not announced
13R—MOVIE: "Somewhere in the Night," John Hodiak, 1946 release
33—MOVIE: Not announced

11:15 P. M.

- 5—NEWS: Weather (L)
6D—MOVIE: "Daisy Kenyon," Joan Crawford, Henry Fonda, 1947 release

11:30 P. M.

- 4M—WEATHER: News (L)
5—MOVIE: "Sundown," Gene Tierney, George Sanders, 1941 release
12—MOVIE: Not announced
13—MOVIE: Not announced
27—LATE REPORT (L)

11:45 P. M.

- 4M—BRAINS AND BRAWN: Quiz (F)
27—MOVIE: Not announced

12:00 MIDNIGHT

- 2, 8—WRESTLING (F)
7—MOVIE: Not announced
18—MOVIE: "Canal Zone," Chester Morris, 1942 release

12:15 A. M.

- 4M—MOVIE: "Torchy Gets Her Man," Glenda Farrell, 1938 release



JANE RUSSELL
Not related to John Russell.

"Is Jane Russell any relation to John Russell of 'The Lawman'?"

—Michelle Martinez
Chicago

No.

"How old is George Nader? And what was his first movie?"

—Deanna Otis
Sterling, Ill.

George is 37. His first movie was "Monsoon" with Celeste Holm. George attracted attention of TV viewers through an appearance on the Loretta Young show. He's also played "Fireside Theater," "Private Secretary," "Hallmark Hall of Fame," and others.

"Will you please tell me if Lucy and Desi Arnaz have a little girl?"

—Neva Curtis
Oblong, Ill.

Yes. They have a little girl, Lucie Desiree—and a little boy, Desiderio.

"What is the name of Jim Arness—Marshal Matt Dillon's—wife?"

—Sharon James
Streator, Ill.

Virginia. He calls her 'Vir.'

"Is Nick Adams married?"

—Marie Paulson
Caledonia, Ill.

No.

"In the days before television, there were two sisters known as the DeZurik Sisters. One was Carolyn—now of 'Polka-Go-Round' and I forget the name of the other. Could you answer this?"

—B. John Brabec
Chicago

Carolyn was teamed with her sister, Mary Jane, as the DeZurik Sisters. Mary Jane married and left the act. Carolyn went solo for awhile and was later joined by another sister, Lorraine. They were billed as the "Cackle Sisters." Then Lorraine quit.

"Does Elvis Presley have a stage name?"

—Robyn Kemerschen
La Grange, Ill.

That's it. It's also his legal name.

"Could you tell me who is the fastest on the draw—Wyatt Earp or Colt .45?"

—Barbara Moriarty
Chicago

Colt .45 is faster. But that really isn't a fair match, Barbara, because Wyatt has a bigger gun to draw than does Chris Colt. Wyatt's Buntline special is almost twice as big and heavy as a Colt .45.

"I understand Red Foley is married to a Sally Sweet. What happened to his first wife, Eva Overstake?"

—K. Sikorski
Melrose Park, Ill.

She died in 1952.

"Whatever happened to Hoot Gibson?"

—Janice G.
Chicago

Hoot has come out of semi-retirement to appear in a movie called "The Horse Soldiers." He is in Hollywood at work on the film now.

"What's the name of Pat Boone's wife?"

—Colleen Caulfield
Chicago

Shirley Foley Boone.

Send your questions to TV Questions Editor, The Chicago American, 326 W. Madison st., Chicago 6, Ill.

Story of Peron Era on 'Twentieth Century'

One of the strangest dictatorships in modern history, that of Juan and Evita Peron in Argentina, will be the subject of a filmed documentary report when CBS-TV's "The Twentieth Century" presents "Peron and Evita" Sunday (5:30 p. m., CST). CBS Newsman Walter Cronkite is the narrator. "Peron and Evita" was written for "The Twentieth Century" by Ray Josephs, former foreign correspondent in Buenos Aires whom Peron forced to leave the country.

Two Thanksgiving Parades on NBC and ABC Thursday

The holiday spirit will prevail Thanksgiving Day morning when the NBC and ABC networks televise parades.

From New York's Herald Square will be seen the annual Macy's Thanksgiving Day parade, with Bert Parks and Frank Blair hosting the hour-long spectacle for NBC-TV. (10-11 a. m., CST).

The ABC-TV network will carry the 23d annual J. L. Hudson Thanksgiving Day Parade, in Detroit with Bob (Capt. Kangaroo) Keeshan, m. c., (9:15-10 a. m., CST).



PERT CHRISTIE Logan will be "Miss County Fair" during Thanksgiving Week on NBC's popular "County Fair" (Daily, 3:30 p. m., CST).



"... got a letter from Mama."



"... Grandpa Ogg broke his new glasses."



"... now he's drinking out of the bottle."

FUNNYMAN CLIFF Arquette, as Charlie Weaver from Mt. Idy, is a frequent guest on NBC's "Jack Paar Show." Here he reads Jack his regular letter from Mama Weaver.